

ELECTRO MECHANICAL COMPONENTS

Table of Contents

DIRECT ACTING BRAKE..... J 2
HYSTERESIS BRAKES J 3 - J 4

For metric options, please see our metric catalog.

DIRECT ACTING BRAKE

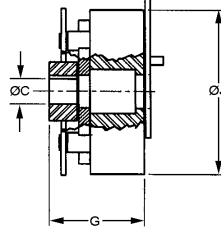
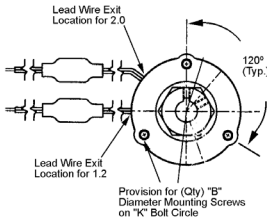
SERIES

SPRING-SET

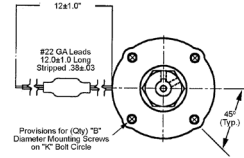
These high quality, low cost brakes optimize performance for holding (Static) or stopping (Dynamic) applications. The 3-20 Series brakes are particularly well-suited for use with or on small gear motors or in applications where gear motors can be used.

They are Spring-Set, electrically released fail-safe brakes ideally suited for applications

SIZES 1.2 AND 2.0



SIZES 1.8 AND 2.8



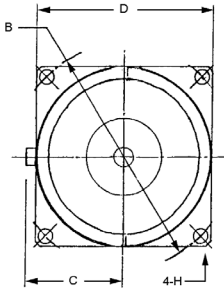
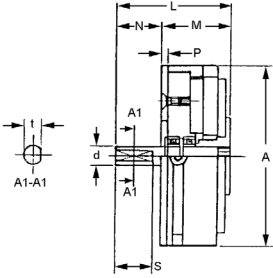
SIZE	STOCK NO.	TORQUE (IN.-LB.)	APPROX WT. (LB.)	ELECT. POWER (WATTS)	MOUNTING SCREWS			G	ØJ	VOLTAGE	ØC	KEYWAY
					QTY	B	K					
1.2	3-20-2401G-0A-JD	3	0.4	7	3	#6	1.545	.890	1.77	90 VDC	3/16	N/A
1.2	3-20-2401G-0C-JD	3	0.4	7	3	#6	1.545	.890	1.77	90 VDC	1/4	N/A
1.2	3-20-2401G-0A-ED	3	0.4	7	3	#6	1.545	.890	1.77	24 VDC	3/16	N/A
1.2	3-20-2401G-0C-ED	3	0.4	7	3	#6	1.545	.890	1.77	24 VDC	1/4	N/A
1.8	3-20-4401G-0D-JD	7	1.1	10	4	#8	2.125	1.260	2.43	90 VDC	1/4	1/16 X 1/32
1.8	3-20-4401G-0F-JD	7	1.1	10	4	#8	2.125	1.260	2.43	90 VDC	5/16	1/16 X 1/32
1.8	3-20-4401G-0D-ED	7	1.1	10	4	#8	2.125	1.260	2.43	24 VDC	1/4	1/16 X 1/32
1.8	3-20-4401G-0F-ED	7	1.1	10	4	#8	2.125	1.260	2.43	24 VDC	5/16	1/16 X 1/32
2.0	3-20-5401G-0F-JD	18	1.2	12.5	3	#6	2.220	1.190	2.52	90 VDC	5/16	1/16 X 1/32
2.0	3-20-5401G-0F-ED	18	1.2	12.5	3	#6	2.220	1.190	2.52	24 VDC	5/16	1/16 X 1/32
2.0	3-20-5401G-0H-JD	18	1.2	12.5	3	#6	2.220	1.190	2.52	90 VDC	3/8	3/32 X 3/64
2.0	3-20-5401G-0H-ED	18	1.2	12.5	3	#6	2.220	1.190	2.52	24 VDC	3/8	3/32 X 3/64
2.8	3-20-7401G-0H-JD	35	2	17	4	#8	2.844	1.415	3.25	90 VDC	3/8	3/32 X 3/64
2.8	3-20-7401G-0H-ED	35	2	17	4	#8	2.844	1.415	3.25	24 VDC	3/8	3/32 X 3/64
2.8	3-20-7401G-0J-JD	35	2	17	4	#8	2.844	1.415	3.25	90 VDC	1/2	1/8 X 1/16
2.8	3-20-7401G-0J-ED	35	2	17	4	#8	2.844	1.415	3.25	24 VDC	1/2	1/8 X 1/16

For other bore sizes, voltages, and mounting configurations call for quote and availability. Brakes are also available with manual release levers, also special order.

HYSTERESIS BRAKE

MAXIMUM SLIP SPEED

10,000 RPM



PERFORMANCE SPECIFICATIONS

STOCK NO.	TORQUE RANGE (IN.-LB.)	MAX. SLIP SPEED (RPM)	MAX. HEAT DISSIPATION (W)	MOMENT OF INERTIA		WEIGHT (LBS)
				Body (kgm ²)	J x 10 ⁻⁴ Shaft (kgfcm ²)	
PHT 0.05S	0-0.066	10,000	3	0.0048	0.0190	.198

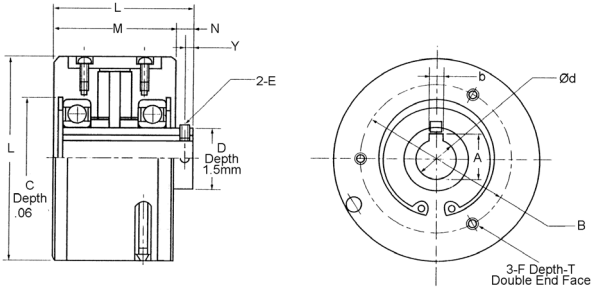
PERFORMANCE SPECIFICATIONS

STOCK NO.	∅d -.0002 -.0004	t	∅A	∅B ±.008	C	D	H	L	M	N	P	S
PHT 0.05S	.1181	.10	1.26	1.575	.77	1.38	.13	1.10	.71	.39	.08	.31

HYSTERESIS BRAKE

MAXIMUM SLIP SPEED

1800 RPM



PERFORMANCE SPECIFICATIONS

STOCK NO.	TORQUE RANGE (IN.-LB.)	MAX. SLIP SPEED (RPM)	MAX. HEAT DISSIPATION (W)	MOMENT OF INERTIA		WEIGHT (LBS)
				Body (kgm ²)	J x 10 ⁻⁴ Shaft (kgfcm ²)	
PHT 1.2D	.088-1.50	1800	15	1.3	0.078	0.66

PERFORMANCE SPECIFICATIONS

STOCK NO.	Ød -.0005 -.0000	A	B	C ^{H7}	D	E	F	T	L	M	N	Y
PHT 1.2D	.2362 X 1.48	1.85	1.26±.008	.87	.71	M3	M3	.24	1.56	1.28	.28	.12