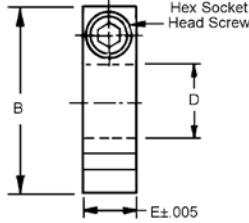
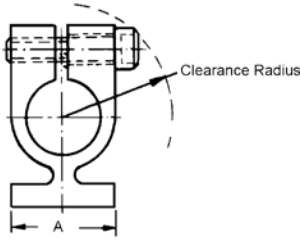


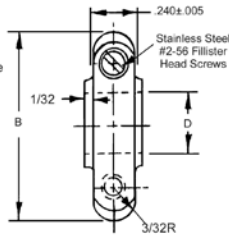
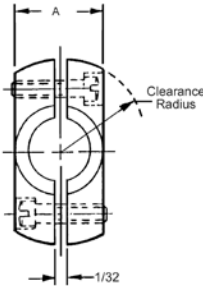
SPLIT HUB CLAMPS

SHAFT SIZE	MATERIAL
1/8" TO 3/8"	STAINLESS STEEL AND MILD STEEL



STOCK NO.	MATERIAL	D	A	B	CLEAR. RADIUS	E	SCREW	FINISH	SHAFT SIZE
CG3-1	416 STAINLESS STEEL	.188	.312	.687	7/16	.240	# 6-32	CLEAR PASS.	1/8
CG3-2	416 STAINLESS STEEL					.240	# 6-32	BLACK PASS.	
CG3-7	303 STAINLESS STEEL					.250	# 6-32	CLEAR PASS.	
CG3-28	MILD STEEL					.140	# 2-56	CAD. PLATE	
CG3-3	416 STAINLESS STEEL	.251	.378	.812	33/64	.240	# 6-32	CLEAR PASS.	3/16
CG3-4	416 STAINLESS STEEL					.240	# 6-32	BLACK PASS.	
CG3-9	303 STAINLESS STEEL					.250	# 6-32	CLEAR PASS.	
CG3-30	MILD STEEL					.140	# 2-56	CAD. PLATE	
CG3-5	416 STAINLESS STEEL	.313	.437	.812	9/16	.240	# 6-32	CLEAR PASS.	1/4
CG3-6	416 STAINLESS STEEL					.240	# 6-32	BLACK PASS.	
CG3-11	303 STAINLESS STEEL					.250	# 6-32	CLEAR PASS.	
CG3-32	MILD STEEL					.140	# 2-56	CAD. PLATE	
CG3-13	303 STAINLESS STEEL	.376	.500	.875	9/16	.250	# 6-32	CLEAR PASS.	5/16
CG3-14	MILD STEEL					.250	# 6-32	CAD. PLATE	
CG3-34	MILD STEEL					.140	# 2-56	CAD. PLATE	
CG3-15	303 STAINLESS STEEL	.438	.625	1.032	43/64	.250	# 6-32	CLEAR PASS.	3/8
CG3-16	MILD STEEL					.250	# 6-32	CAD. PLATE	
CG3-36	MILD STEEL					.140	# 2-56	CAD. PLATE	

SHAFT SIZE	TYPE	MATERIAL
1/8" TO 3/8"	BALANCED CLAMP	STAINLESS STEEL AND MILD STEEL



STOCK NO.	D	A	B	TYPE CLEAR. RADIUS	SPLIT HUB OF BALANCE	INSIDE DIA. (REF.)
CG2-1	.188	.312	.718	3/8	DYNAMICALLY BALANCED	1/8
CG2-3	.251	.374	.750	13/32		3/16
CG2-5	.313	.436	.875	15/32		1/4
CG2-2	.188	.312	.718	3/8	AS CAST	1/8
CG2-4	.251	.374	.750	13/32		3/16
CG2-6	.313	.436	.875	15/32		1/4