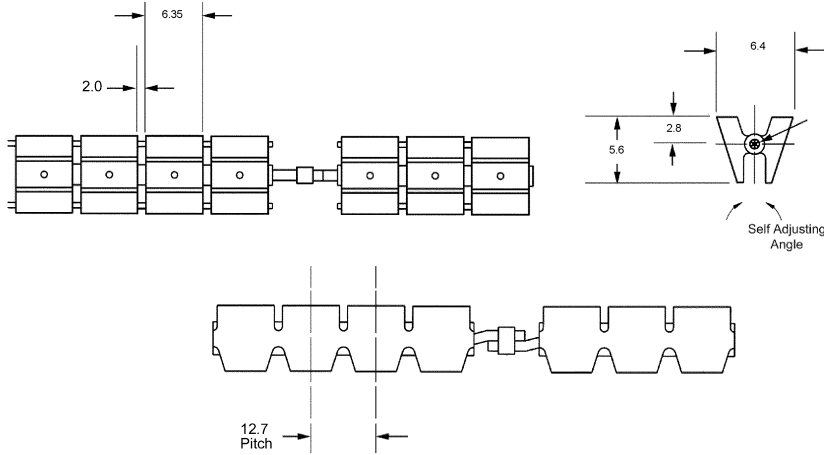
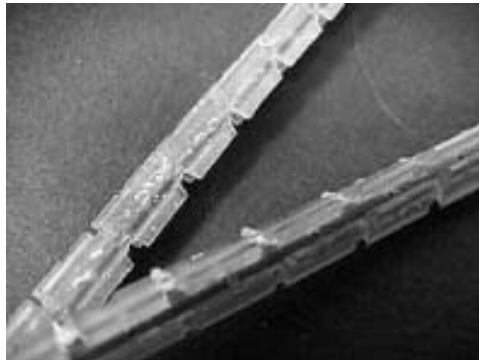


# V-BELTS

SERIES	WIDTH	HEIGHT	MATERIAL	BERG'S ® NAME	PULLEY
<b>2V</b>	<b>6.4</b>	<b>5.6</b>	Polyurethane (Brown) with 0.8mm Dia. Stainless Steel Cable	<b>POW-R-VEE®</b>	Operates with Pow-R-Vee 2V Series



- More sidewall contact
- Less slippage
- Greater power transmission
- Infinite length variations
- Extra strong
- Light weight
- Silent drive
- 90A Durometer
- Mass 20 Grams/Meter
- Ultimate Tensile Strength 222N
- Temperature Range +82°C to -26°C
- Recommended Operating Load 53N
- Recommended Max. Operating Speed 1.91 m/s
- For Field Splice Order 2V-7.



BULK FOOTAGE NOT SPLICED	
STOCK NO.	LENGTH
2V-1.5M	1.5 Meters
2V-3.0M	3.0 Meters
2V-7.5m	7.5 Meters
2V-15.0M	15.0 Meters
2V-30.0M	30.0 Meters

STOCK NO.	LENGTH (Ref.)
2V-16	152.4
2V-18	171.5
2V-20	190.5
2V-22	209.6
2V-24	228.6
2V-26	247.7
2V-28	266.7
2V-30	285.6
2V-32	304.8
2V-34	323.9
2V-36	342.9
2V-38	362.0
2V-40	381.0
2V-42	400.1
2V-44	419.1
2V-46	438.2
2V-48	457.2
2V-50	476.3
2V-52	495.3
2V-54	514.4
2V-56	533.4
2V-58	552.5
2V-60	571.5
2V-62	590.6
2V-64	609.6
2V-66	628.7
2V-68	647.7
2V-70	666.8
2V-72	685.8
2V-74	704.9
2V-76	723.9
2V-78	743.0
2V-80	762.0
2V-82	781.1
2V-84	800.1
2V-86	819.2
2V-88	838.2
2V-90	857.3
2V-92	876.3
2V-94	895.4
2V-96	914.4
2V-98	933.5
2V-100	952.5
2V-102	971.6
2V-104	990.6
2V-106	1009.7
2V-108	1028.7
2V-110	1047.8
2V-112	1066.8
2V-114	1085.9
2V-116	1104.9
2V-118	1124.0
2V-120	1143.0
2V-122	1162.1
2V-124	1181.1
2V-126	1200.2
2V-128	1219.2
2V-130	1238.3
2V-132	1257.3
2V-134	1276.4
2V-136	1295.4
2V-140	1333.5