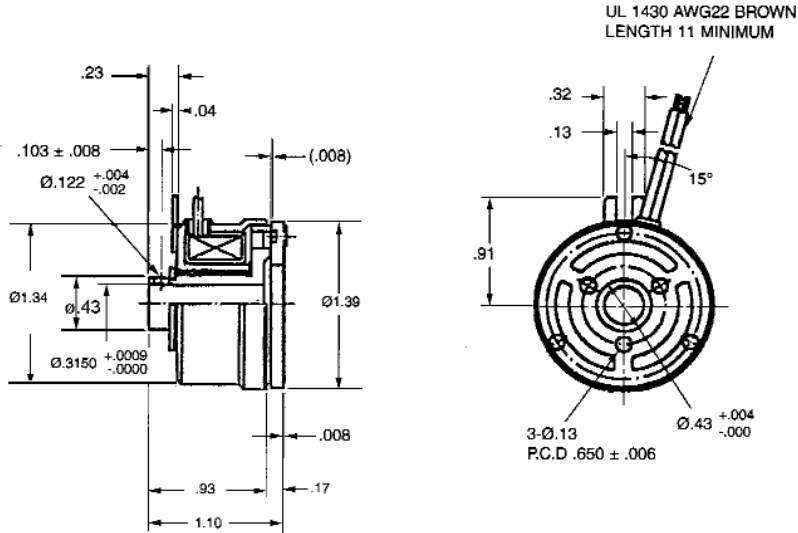


ELECTROMAGNETIC CLUTCH

SERIES

BARE ARMATURE DESIGN



STOCK NO.	CLUTCH SPECIFICATIONS
FMC 10	<ol style="list-style-type: none"> 1. NORMAL OPERATING VOLTAGE = 12VDC 2. WATTAGE = 4.5W 3. STATIC TORQUE = 0.8 Nm MINIMUM AT 12VDC 4. INSULATION CLASS = E 5. INSULATION RESISTANCE = 100MΩ MINIMUM AT 500VDC 6. DIELECTRIC STRENGTH = 1000VAC FOR 1 MINUTE

Berg offers a Micro Series Electromagnetic Clutch in a bare armature design for flexibility in drive design. For example, a gear or pulley with a bearing bore can be mounted to the three 1/8 dia. mounting holes. A clutch coupling for split shafts can be made by mounting a drive hub to the three armature mounting holes. This unit can also be used as a brake by mounting the armature to a fixed reaction point. Maximum recommended continuous speed of the rotor is 300 RPM.

Note: Air gap of .008" should be set for optimum performance.