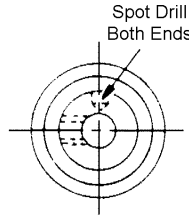
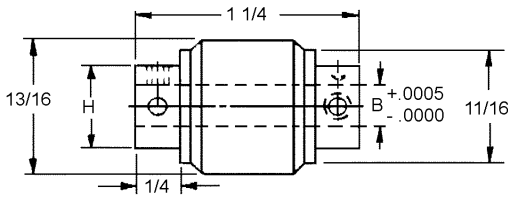


NEO-FLEX COUPLINGS

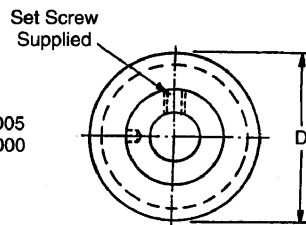
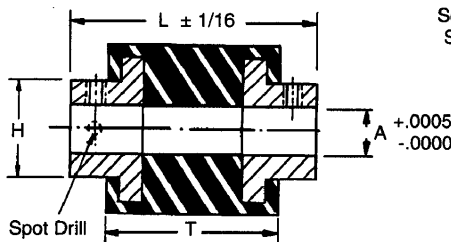
BORE	STYLE	MATERIAL
.1200 TO .3748	PIN HUB	303 STAINLESS STEEL HUB MOLDED NEOPRENE BODY



STOCK NO.	B	H	SET SCREW	SPOT DRILL
CO14-7	.1200 .1248	5/16 5/16	#2-56 #2-56	#69 #69
CO14-10	.1200 .1873	5/16 3/8	#2-56 #4-40	#69 #60
CO14-9	.1200 .2498	5/16 1/2	#2-56 #6-32	#69 #50
CO14-1	.1248 .1248	5/16 5/16	#2-56 #2-56	#69 #69
CO14-4	.1248 .1873	5/16 3/8	#2-56 #4-40	#69 #60
CO14-5	.1248 .2498	5/16 1/2	#2-56 #6-32	#69 #50
CO14-8	.1562 .1873	5/16 3/8	#2-56 #4-40	#69 #60
CO14-2	.1873 .1873	3/8 3/8	#4-40 #4-40	#60 #60
CO14-6	.1873 .2498	3/8 1/2	#4-40 #6-32	#60 #50
CO14-3	.2498 .2498	1/2 1/2	#6-32 #6-32	#50 #50
CO14-11	.3123 .3123	1/2 1/2	#6-32 #6-32	#50 #50
CO14-12	.3748 .3748	5/8 5/8	#8-32 #8-32	#31 #31

- Isolates torsional vibration
- Insulates between shafts
- 1° angular misalignment (Max.)
- .005 Shaft misalignment (Max.)
- Maximum working torque 9 in-lb

BORES	STYLE	MATERIAL
.1873 TO .4998	PIN HUB	303 STAINLESS STEEL HUB POLYURETHANE BODY



STOCK NO.	A	H	D	L	T
CC1-3	.1873	3/8	15/16	1 1/4	3/4
CC1-14	.2498	5/8	1 1/8	1 9/16	15/16
CC1-15	.3123	5/8	1 1/8	1 9/16	15/16
CC1-16	.3748	5/8	1 1/8	1 9/16	15/16
CC1-8	.4998	1	1 5/8	2 1/4	1 3/8

Combination bores are available on request.