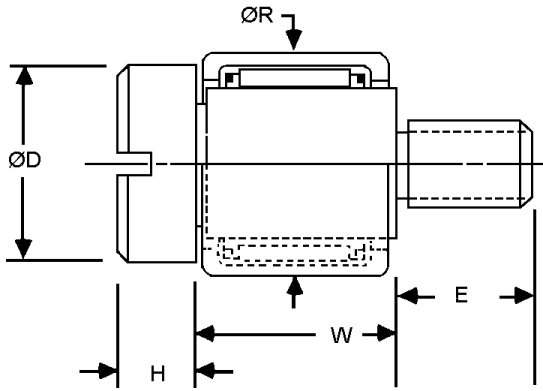


ROLLER BEARING CAM FOLLOWER

TYPE
HEAVY DUTY



Materials:

Screw - 416 Stainless Steel

Roller Cup - Case Hardened Steel

Needle Bearings - 52100 Hardened Steel

Bearing Cage - Low Carbon Steel

See the Bearings Section of this book for Bearings Specifications.

- High Load
- Low Profile
- Low Friction

STOCK NO.	ØR	W	ØD	H	E	SCREW THREAD
JE-R-1	.2500	.250	7/32	1/8	5/32	#4-40
JE-R-2	.3438	.250	5/16	5/32	3/16	#8-32
JE-R-3	.3438	.375	5/16	5/32	3/16	#8-32
JE-R-4	.4375	.250	3/8	3/16	1/4	#10-32
JE-R-5	.5000	.312	7/16	7/32	7/16	#1/4-20
JE-R-6	.5625	.312	1/2	1/4	1/2	#5/16-18
JE-R-7	.5625	.625	1/2	1/4	1/2	#5/16-18
JE-R-8	.6875	.750	5/8	5/16	5/8	#3/8-16