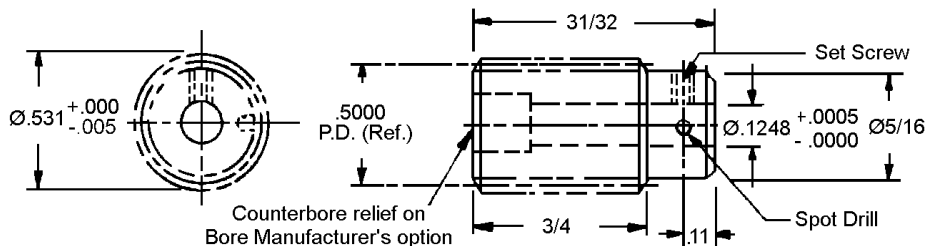


# PRECISION WORMS

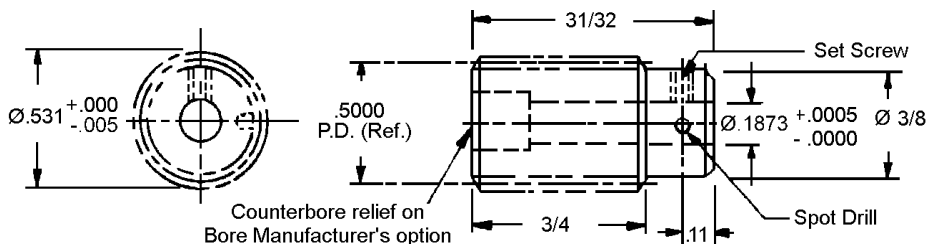
PITCH	STYLE	BORE	MATERIAL	AGMA QUALITY	TYPE
64	SINGLE, DOUBLE OR FOUR THREAD	1/8"	303 STAINLESS STEEL	10	RIGHT HAND



STOCK NO.	THREAD	LEAD	LEAD ANGLE	PRESSURE ANGLE
W64S-2S	SINGLE	.04908	1° - 47'	14-1/2°
W64S-2D	DOUBLE	.09817	3° - 35'	
W64S-2F	FOUR	.19635	7° - 8'	

Counterbore relief on bore manufacturer's option.

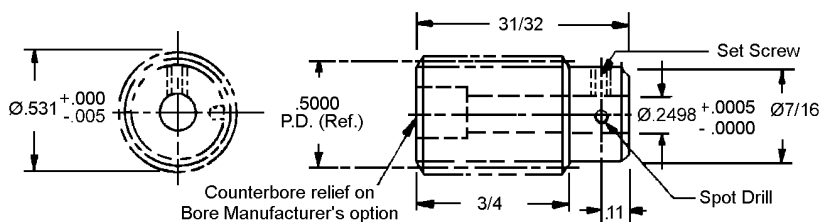
PITCH	STYLE	BORE	MATERIAL	AGMA QUALITY	TYPE
64	SINGLE, DOUBLE OR FOUR THREAD	3/16"	303 STAINLESS STEEL	10	RIGHT HAND



STOCK NO.	THREAD	LEAD	LEAD ANGLE	PRESSURE ANGLE
W64S-3S	SINGLE	.04908	1° - 47'	14-1/2°
W64S-3D	DOUBLE	.09817	3° - 35'	
W64S-3F	FOUR	.19635	7° - 8'	

Counterbore relief on bore manufacturer's option.

PITCH	STYLE	BORE	MATERIAL	AGMA QUALITY	TYPE
64	SINGLE, DOUBLE OR FOUR THREAD	1/4"	303 STAINLESS STEEL	10	RIGHT HAND



STOCK NO.	THREAD	LEAD	LEAD ANGLE	PRESSURE ANGLE
W64S-4S	SINGLE	.04908	1° - 47'	14-1/2°
W64S-4D	DOUBLE	.09817	3° - 35'	
W64S-4F	FOUR	.19635	7° - 8'	

Counterbore relief on bore manufacturer's option.