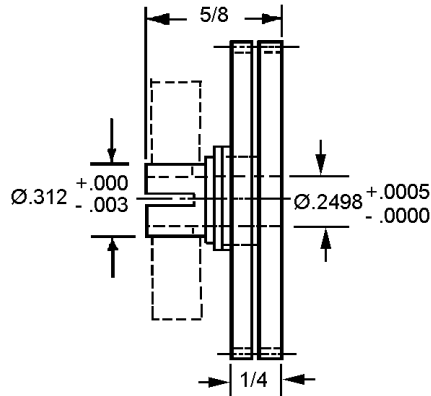


ANTI-BACKLASH GEARS

PITCH	STYLES	MATERIAL	AGMA QUALITY	PRESSURE ANGLE
1/10	CLAMP STYLE	303 STAINLESS STEEL OR 2024-T4 ALUMINUM ANODIZED	10	20°



STAINLESS STEEL STOCK NO.	ALUMINUM STOCK NO.	PITCH	NO. OF TEETH	PITCH DIA.	OUTSIDE DIA.
AC31BS-25	AC31DS-25	1/10	25	.7958	.859
AC31BS-30	AC31DS-30		30	.9549	1.018

Available on request:
Other numbers of teeth
AGMA Quality 12 and 14
14-1/2° Pressure Angle

For Couplings See Section G.
For Shafts, Bearings and Collars See Section I.