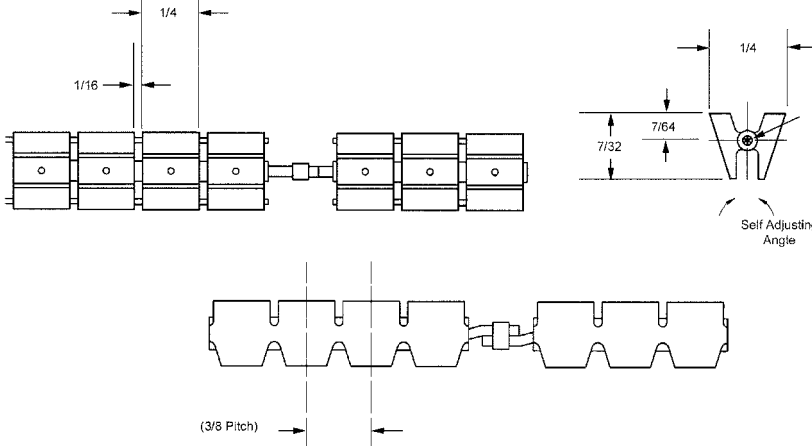


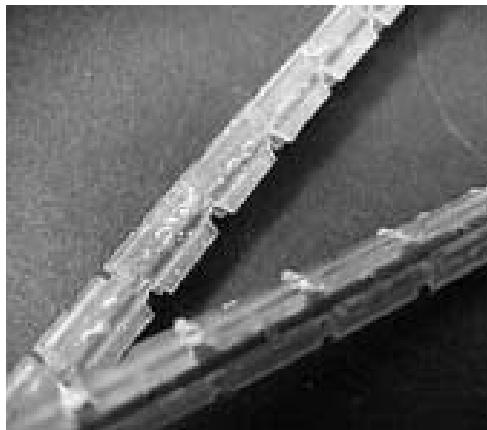
V-BELTS

A

SERIES	WIDTH	HEIGHT	MATERIAL	BERG'S ® NAME	PULLEY
2V	1/4"	7/32"	Polyurethane (Brown) with 1/32" Dia. Stainless Steel Cable	POW-R-VEE®	Operates with Pow-R-Vee 2V Series



- More sidewall contact
- Less slippage
- Greater power transmission
- Infinite length variations
- Extra strong
- Light weight
- 90A Durometer
- Weight .21 oz./ft.
- Ultimate Tensile Strength 50 lbs.
- Temperature Range +180°F to -15°F
- Silent drive
- Recommended Operating Load 12 lbs.
- Recommended Max. Operating Speed 376 ft./min.
- For Field Splice Kit order 2V-7.



BULK FOOTAGE NOT SPLICED	
STOCK NO.	LENGTH
2V-5FT	5 Feet
2V-10FT	10 Feet
2V-25FT	25 Feet
2V-50FT	50 Feet
2V-100FT	100 Feet

STOCK NO.	LENGTH (Ref.)
2V-16	6.00
2V-18	6.75
2V-20	7.50
2V-22	8.25
2V-24	9.00
2V-26	9.75
2V-28	10.50
2V-30	11.25
2V-32	12.00
2V-34	12.75
2V-36	13.50
2V-38	14.25
2V-40	15.00
2V-42	15.75
2V-44	16.50
2V-46	17.25
2V-48	18.00
2V-50	18.75
2V-52	19.50
2V-54	20.25
2V-56	21.00
2V-58	21.75
2V-60	22.50
2V-62	23.25
2V-64	24.00
2V-66	24.75
2V-68	25.50
2V-70	26.25
2V-72	27.00
2V-74	27.75
2V-76	28.50
2V-78	29.25
2V-80	30.00
2V-82	30.75
2V-84	31.50
2V-86	32.25
2V-88	33.00
2V-90	33.75
2V-92	34.50
2V-94	35.25
2V-96	36.00
2V-98	36.75
2V-100	37.50
2V-102	38.25
2V-104	39.00
2V-106	39.75
2V-108	40.50
2V-110	41.25
2V-112	42.00
2V-114	42.75
2V-116	43.50
2V-118	44.25
2V-120	45.00
2V-122	45.75
2V-124	46.50
2V-126	47.25
2V-128	48.00
2V-130	48.75
2V-132	49.50
2V-134	50.25
2V-136	51.00
2V-140	52.50