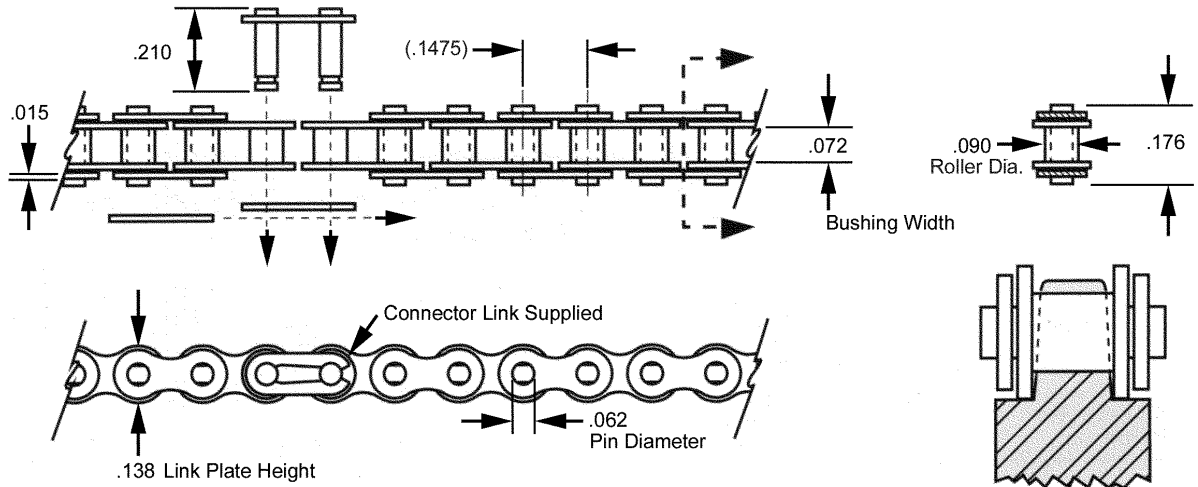


LINK CHAIN

| CIRCULAR PITCH | ROLLER DIAMETER | BERG NAME | MATERIAL | SPROCKET |
|----------------|-----------------|------------------|--|--|
| .1475 | .090 | ROW-L-ER® | Stainless Steel, Non-Magnetic, Prestretched Single Strand | Operates with 14EM and 14SP series. |



| STOCK NO. | NO. OF PITCHES | LENGTH INCHES |
|------------|----------------|---------------|
| RC14SS-40 | 40 | 5.900 |
| RC14SS-50 | 50 | 7.375 |
| RC14SS-60 | 60 | 8.850 |
| RC14SS-70 | 70 | 10.325 |
| RC14SS-80 | 80 | 11.800 |
| RC14SS-90 | 90 | 13.275 |
| RC14SS-100 | 100 | 14.750 |
| RC14SS-110 | 110 | 16.225 |
| RC14SS-120 | 120 | 17.700 |
| RC14SS-130 | 130 | 19.175 |
| RC14SS-140 | 140 | 20.650 |
| RC14SS-150 | 150 | 22.125 |
| RC14SS-160 | 160 | 23.600 |
| RC14SS-170 | 170 | 25.075 |
| RC14SS-180 | 180 | 26.550 |
| RC14SS-190 | 190 | 28.025 |
| RC14SS-200 | 200 | 29.500 |
| RC14SS-210 | 210 | 30.975 |
| RC14SS-220 | 220 | 32.450 |
| RC14SS-230 | 230 | 33.925 |
| RC14SS-240 | 240 | 35.400 |
| RC14SS-250 | 250 | 36.875 |
| RC14SS-260 | 260 | 38.350 |
| RC14SS-270 | 270 | 39.825 |
| RC14SS-280 | 280 | 41.300 |
| RC14SS-290 | 290 | 42.775 |
| RC14SS-300 | 300 | 44.250 |
| RC14SS-310 | 310 | 45.725 |
| RC14SS-320 | 320 | 47.200 |
| RC14SS-330 | 330 | 48.675 |
| RC14SS-340 | 340 | 50.150 |
| RC14SS-350 | 350 | 51.625 |
| RC14SS-360 | 360 | 53.100 |
| RC14SS-370 | 370 | 54.575 |
| RC14SS-380 | 380 | 56.050 |
| RC14SS-390 | 390 | 57.524 |

* Maximum recommended operating load is for a slip fit connecting link, which is standard. A press fit connecting link is a special available on request.

Special lengths available on request (only even numbers of links).

Maximum recommended Operating Load = 20 lbs.*

Ultimate Tensile Strength = 180 lbs.

.035lbs/foot - Must be lubricated.

Use Connector Link Berg P/N RC14SS-CL.



| STOCK NO. | LENGTH |
|--------------|--------|
| RC14SS-5FT | 5FT |
| RC14SS-10FT | 10FT |
| RC14SS-25FT | 25FT |
| RC14SS-50FT | 50FT |
| RC14SS-100FT | 100FT |