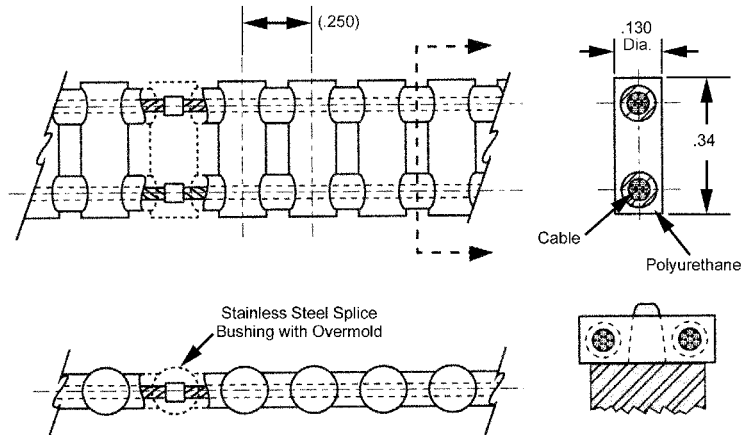


CHAIN CABLE

CIRCULAR PITCH	PIN DIAMETER	MATERIALS	BERG'S ® NAME	SPROCKET
.250	.130	Polyurethane (Yellow) 1/32" Dia. Stainless Steel Cable*	Flex-E-Pitch®	Operates with 25LC, 25CF, and 25CP series.



STOCK NO.	NO. OF PITCHES	LENGTH (Ref.)
25CCF-40-E	40	10.000
25CCF-50-E	50	12.500
25CCF-60-E	60	15.000
25CCF-70-E	70	17.500
25CCF-80-E	80	20.000
25CCF-90-E	90	22.500
25CCF-100-E	100	25.000
25CCF-110-E	110	27.500
25CCF-120-E	120	30.000
25CCF-130-E	130	32.500
25CCF-140-E	140	35.000
25CCF-150-E	150	37.500
25CCF-160-E	160	40.000
25CCF-170-E	170	42.500
25CCF-180-E	180	45.000
25CCF-190-E	190	47.500
25CCF-200-E	200	50.000
25CCF-210-E	210	52.500
25CCF-220-E	220	55.000
25CCF-230-E	230	57.500
25CCF-240-E	240	60.000
25CCF-250-E	250	62.500
25CCF-260-E	260	65.000
25CCF-270-E	270	67.500
25CCF-280-E	280	70.000
25CCF-290-E	290	72.500
25CCF-300-E	300	75.000
25CCF-310-E	310	77.500
25CCF-320-E	320	80.000
25CCF-330-E	330	82.500
25CCF-370-E	370	92.500
25CCF-380-E	380	95.000
25CCF-390-E	390	97.500

- For Field Splice Kit order 25CCF-7.
 - *Available with Aramid Core construction.
 - ** Reduce Operating Load Rating by 50% for Field Splices.
- See page VII for alternate belt construction and reverse belt bending applications.

Designed to replace standard metal roller chain systems:

- No multiple link joints to bind.
- Lubrication is never required.
- Easily modified to any length.
- Large selection of mating sprockets.
- Infinite Lengths
 - Silent Drive
 - Rust Proof
 - 90A Durometer
 - Non-Magnetic
 - Positive Drive
 - Zero Backlash
 - Weight .30 oz./ft.
- Ultimate Tensile Strength 100 lbs. (22 lbs./Pin)
When belt is used in open loop configuration (without splice, no crimp bushing)
 - Temperature Range +180°F to -15°F
- Recommended Operating Load 25 lbs.
- Recommended Max. Operating Speed 376 Feet/Min.

BULK FOOTAGE-NOT SPLICED	
STOCK NO.	LENGTH
25CCF-5FT	5 FT
25CCF-10FT	10 FT
25CCF-25FT	25 FT
25CCF-50FT	50 FT
25CCF-100FT	100 FT

