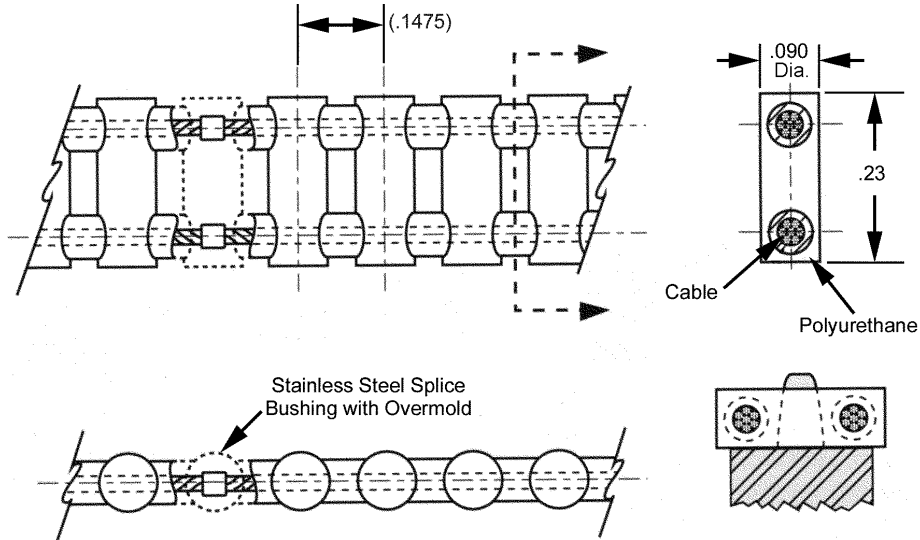


# CABLE CHAIN

CIRCULAR PITCH	PIN DIAMETER	MATERIALS	BERG'S ® NAME	SPROCKET
<b>.1475</b>	<b>.090</b>	Polyurethane (Blue) 1/32" Stainless Steel Cable*	<b>Flex-E-Pitch®</b>	Operates with 14LC, and 14LP series.



STOCK NO.	NO. OF PITCHES	LENGTH (Ref.)
14CCF-40-E	40	5.900
14CCF-50-E	50	7.375
14CCF-60-E	60	8.850
14CCF-70-E	70	10.325
14CCF-80-E	80	11.800
14CCF-90-E	90	13.275
14CCF-100-E	100	14.750
14CCF-110-E	110	16.225
14CCF-120-E	120	17.700
14CCF-130-E	130	19.175
14CCF-140-E	140	20.650
14CCF-150-E	150	22.125
14CCF-160-E	160	23.600
14CCF-170-E	170	25.075
14CCF-180-E	180	26.550
14CCF-190-E	190	28.025
14CCF-200-E	200	29.500
14CCF-210-E	210	30.975
14CCF-220-E	220	32.450
14CCF-230-E	230	33.925
14CCF-240-E	240	35.400
14CCF-250-E	250	36.875
14CCF-260-E	260	38.350
14CCF-270-E	270	39.825
14CCF-280-E	280	41.300
14CCF-290-E	290	42.775
14CCF-300-E	300	44.250
14CCF-310-E	310	45.725
14CCF-320-E	320	47.200
14CCF-330-E	330	48.675
14CCF-340-E	340	50.150
14CCF-370-E	370	54.575
14CCF-390-E	390	57.525

• For Field Splice Kit order 14CCF-7.

\*Available with Aramid Core construction. See page VII for alternate belt construction and reverse belt bending applications.

\*\* Reduce Operating Load Rating by 50% for field splices.

Designed to replace standard metal roller chain systems:

- No multiple link joints to bind.
- Lubrication is never required.
- Easily modified to any length.
- Large selection of mating sprockets.
- Infinite Lengths
- Silent Drive
- Rust Proof
- 90A Durometer
- Non-Magnetic
- Positive Drive
- Zero Backlash
- Weight .15 oz./ft.
- Ultimate Tensile Strength 100 lbs. - 12 lbs./Pin when belt is used in an open configuration (without splice, no crimp bushing)
- Temperature Range +180°F to -15°F
- Recommended Operating Load 25 lbs.
- Recommended Max. Operating Speed 376 Feet/ Min.

BULK FOOTAGE-NOT SPLICED	
STOCK NO.	LENGTH
14CCF-5FT	5 FT
14CCF-10FT	10 FT
14CCF-25FT	25 FT
14CCF-50FT	50 FT
14CCF-100FT	100 FT

