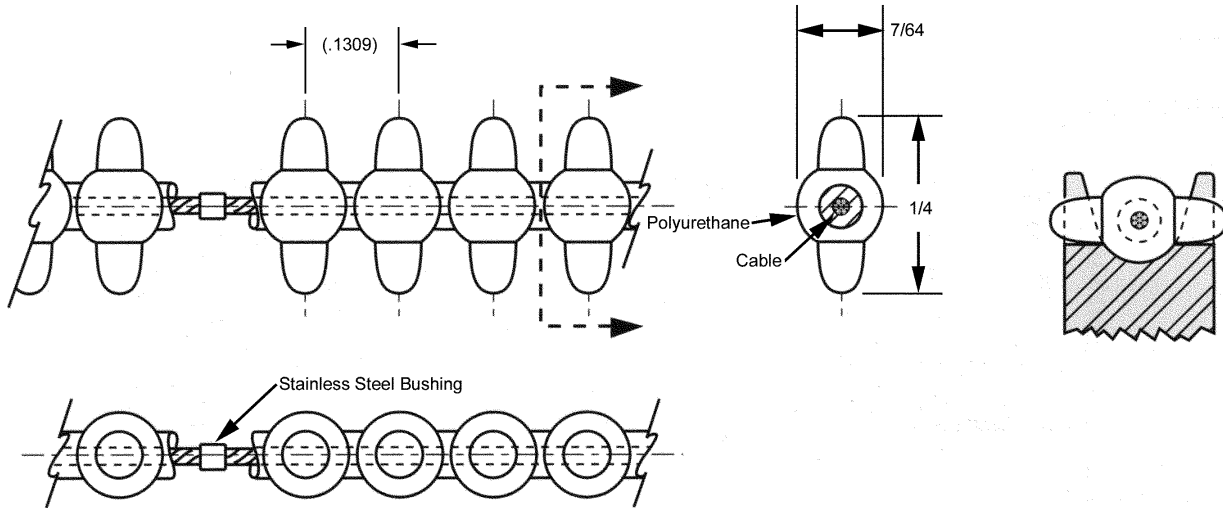


GEAR DRIVE BELTS

PITCH	CIRCULAR PITCH	MATERIALS	BERG'S ® NAME	PULLEY
24	.1309	Polyurethane (Red) 1/32" Dia. Stainless Steel Cable	Flex-E-Belt®	Operates with 24C and 24D series.



STOCK NO.	NO. OF PITCHES	LENGTH (Ref.)
24GBF-50-E	50	6.545
24GBF-52-E	52	6.807
24GBF-54-E	54	7.069
24GBF-56-E	56	7.330
24GBF-58-E	58	7.592
24GBF-60-E	60	7.854
24GBF-62-E	62	8.116
24GBF-64-E	64	8.378
24GBF-66-E	66	8.639
24GBF-68-E	68	8.901
24GBF-70-E	70	9.163
24GBF-75-E	75	9.817
24GBF-80-E	80	10.472
24GBF-85-E	85	11.126
24GBF-90-E	90	11.781
24GBF-95-E	95	12.435
24GBF-100-E	100	13.090
24GBF-105-E	105	13.744
24GBF-110-E	110	14.399
24GBF-115-E	115	15.053
24GBF-120-E	120	15.708
24GBF-130-E	130	17.017
24GBF-140-E	140	18.326
24GBF-150-E	150	19.635
24GBF-160-E	160	20.944
24GBF-170-E	170	22.253
24GBF-180-E	180	23.562
24GBF-190-E	190	24.870
24GBF-200-E	200	26.180
24GBF-220-E	220	28.798
24GBF-240-E	240	31.416
24GBF-260-E	260	34.034
24GBF-280-E	280	36.652
24GBF-300-E	300	39.270
24GBF-320-E	320	41.888
24GBF-360-E	360	47.124
24GBF-420-E	420	54.978

For Field Splice Kit order 24GBF-7.

* Available with Aramid Core. See page VII for alternative belt construction or reverse bending applications.

** Reduce operating load rating by 50% for field splices.

- Positive Drive
- Accommodates twists and turns
- Odd Angles
- No Lubrication
- Infinite Lengths
- Zero Backlash
- Weight .13 oz./ft.
- 90A Durometer
- Ultimate Tensile Strength 50 lbs. - 9 lbs./Pin
- When belt is used in open loop configuration (without splice, no crimp bushing)
- Recommended Operating Load 12 lbs.
- Recommended Max. Operating Speed 376 feet/min.
- Temperature Range +180°F to -15°F

Other numbers of pitches available on request.

BULK FOOTAGE - NOT SPLICED	
STOCK NO.	LENGTH
24GBF-5FT	5FT
24GBF-10FT	10FT
24GBF-25FT	25FT
24GBF-50FT	50FT
24GBF-100FT	100FT

