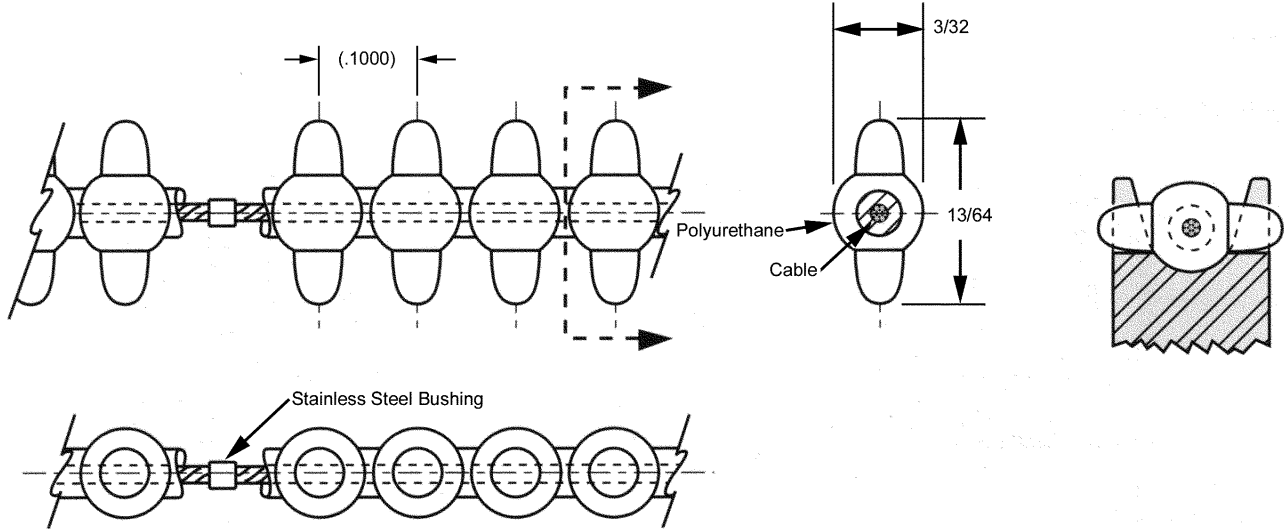


# GEAR DRIVE BELTS

| PITCH       | CIRCULAR PITCH | MATERIALS                                               | BERG'S ® NAME       | PULLEY                                 |
|-------------|----------------|---------------------------------------------------------|---------------------|----------------------------------------|
| <b>1/10</b> | <b>.1000</b>   | Polyurethane (Red)<br>1/32" Dia. Stainless Steel Cable* | <b>Flex-E-Belt®</b> | Operates with GP31<br>and GF31 series. |



| STOCK NO.   | NO. OF PITCHES | LENGTH (Ref.) |
|-------------|----------------|---------------|
| 31GBF-50-E  | 50             | 5.000         |
| 31GBF-52-E  | 52             | 5.200         |
| 31GBF-54-E  | 54             | 5.400         |
| 31GBF-56-E  | 56             | 5.600         |
| 31GBF-58-E  | 58             | 5.800         |
| 31GBF-60-E  | 60             | 6.000         |
| 31GBF-65-E  | 65             | 6.500         |
| 31GBF-70-E  | 70             | 7.000         |
| 31GBF-75-E  | 75             | 7.500         |
| 31GBF-80-E  | 80             | 8.000         |
| 31GBF-85-E  | 85             | 8.500         |
| 31GBF-90-E  | 90             | 9.000         |
| 31GBF-100-E | 100            | 10.000        |
| 31GBF-110-E | 110            | 11.000        |
| 31GBF-120-E | 120            | 12.000        |
| 31GBF-130-E | 130            | 13.000        |
| 31GBF-140-E | 140            | 14.000        |
| 31GBF-150-E | 150            | 15.000        |
| 31GBF-160-E | 160            | 16.000        |
| 31GBF-170-E | 170            | 17.000        |
| 31GBF-180-E | 180            | 18.000        |
| 31GBF-190-E | 190            | 19.000        |
| 31GBF-200-E | 200            | 20.000        |
| 31GBF-210-E | 210            | 21.000        |
| 31GBF-220-E | 220            | 22.000        |
| 31GBF-230-E | 230            | 23.000        |
| 31GBF-240-E | 240            | 24.000        |
| 31GBF-250-E | 250            | 25.000        |
| 31GBF-260-E | 260            | 26.000        |
| 31GBF-270-E | 270            | 27.000        |
| 31GBF-280-E | 280            | 28.000        |
| 31GBF-300-E | 300            | 30.000        |
| 31GBF-350-E | 350            | 35.000        |
| 31GBF-400-E | 400            | 40.000        |
| 31GBF-480-E | 480            | 48.000        |
| 31GBF-500-E | 500            | 50.000        |
| 31GBF-800-E | 800            | 80.000        |

- For Field Splice Kit order 32GBF-7.
- \* Available with Aramid Core. See page VII for alternative belt construction or reverse bending applications.
- \*\*Reduce operating load rating by 50% for field splices.

- Odd Angles
- Infinite Lengths
- Accommodates twists and turns
- Positive Drive
- Zero Backlash
- No Lubrication
- Weight .11 oz./ft.
- 90A Durometer
- Ultimate Tensile Strength 50 lbs. - 8 lbs./Pin  
When belt is used in open loop configuration (without splice, no crimp bushing).
- Temperature Range +180°F to -15°F
- Recommended Operating Load 12 lbs.
- Recommended Max. Operating Speed 376 feet/min.

| BULK FOOTAGE - NOT SPLICED |        |
|----------------------------|--------|
| STOCK NO.                  | LENGTH |
| 31GBF-5FT                  | 5FT    |
| 31GBF-10FT                 | 10FT   |
| 31GBF-25FT                 | 25FT   |
| 31GBF-50FT                 | 50FT   |
| 31GBF-100FT                | 100FT  |

