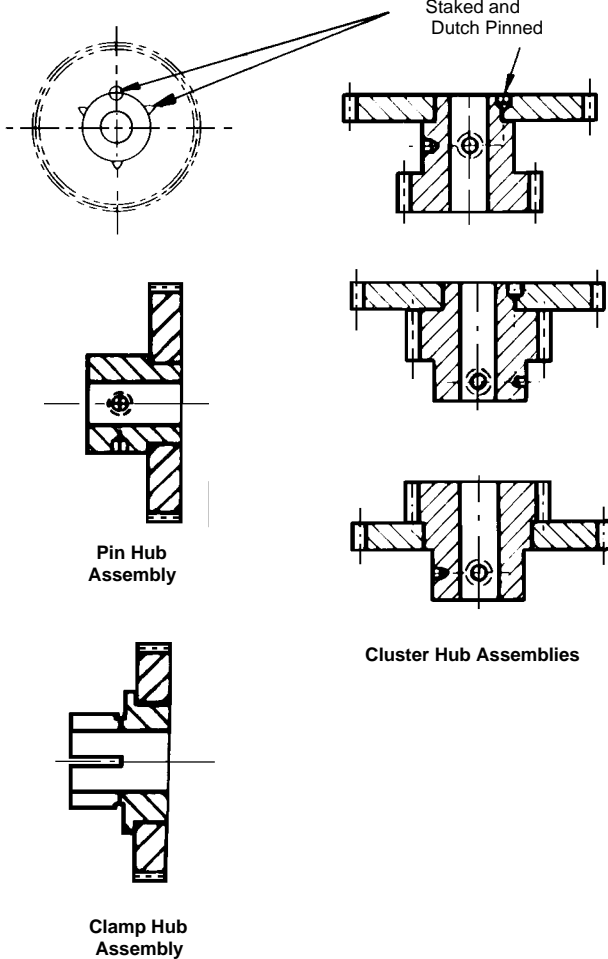


Gear, Dial or Sprocket Assemblies

Wide Selection of Hub sizes to select from

5/64 To 1-1/4 Diameter Bores - All Stainless Steel Hubs



How To Order:
 Hubless Gear → F72S3-72/PH4-6 ← Hub / Indicates assembly

See the following pages for pin hubs, clamp hubs and dual hubs.
 See index for cluster gears.

W. M. Berg, Inc. will assemble hubless gears, sprockets or dials to hubs for a nominal assembly charge.