

# Steel ROW-L-ER Chain Technical Data

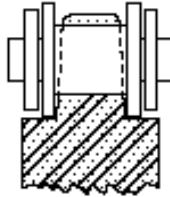
## Operating Notes:

ROW-L-ER Chain offers no slippage due to the positive drive between chain and tooth. This series will also have negligible stretch, long life, and the ability to operate in many different hostile environments such as high temperature, high moisture, high dust or dirty areas, and corrosive atmospheres.

---

### .1475 Pitch Series

- [3,75mm] Circular Pitch
- [2,3mm] Pin (Bushing) Diameter Chain & Sprockets

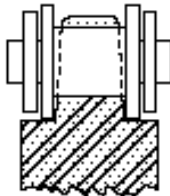


- Weight .035 lbs/ft [52 gms/m]
- Ultimate Tensile: 180 lbs., [801n]
- Lubrication Recommended
- Single Strand
- Rollerless

---

### 1/4" Pitch Series

- 1/4 Pitch
- [6,35] Circular Pitch
- [3,3mm] Pin (Bushing) Diameter Chain & Sprockets
- American Standard No.#25

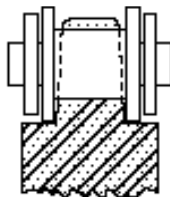


- Weight .09 lbs/ft [139 gms/m]
- Ultimate Tensile:  
700 lbs.[3114n] for Stainless Steel  
875 lbs. [3892n] for Mild Steel
- Lubrication Recommended
- Single Strand
- Rollerless

---

### 3/8" Pitch Series

- 3/8 Pitch
- .375 Circular Pitch
- .200 Pin (Bushing) Diameter Chain & Sprockets
- American Standard No.#35

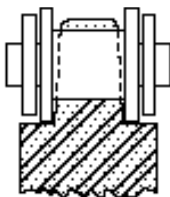


- Weight .22 lbs/ft
- Ultimate Tensile:  
1700 lbs. for Stainless Steel  
2000 lbs for Mild Steel
- Lubrication Recommended
- Single Strand
- Rollerless

---

### 1/2" Pitch Series

- 1/2 Pitch
- .500 Circular Pitch
- .306 Pin (Bushing) Diameter Chain & Sprockets
- American Standard No.#41



- Weight .32 lbs/ft
- Ultimate Tensile:  
2000 lbs. for Stainless Steel  
2400 lbs for Mild Steel
- Lubrication Recommended
- Single Strand
- Rollerless